

URNS INHALATION INTO CHILD'S PLAY



- Visible Feedback to parents
- Better Design for better Compliance
- Flow and Volume control
- Only one Inhalation necessary



CE

WATCHHALER™

INNOVATIVE HOLDING CHAMBER WITH VISIBLE FEEDBACK

DESIGN AND TECHNOLOGY

Discover the novel children spacer Watchhaler!

A new generation provides several improvements. The system has a double chamber that reduces problems of electrostatics. Thus, the aerosol is available for inhalation for several minutes. It gives a visual feedback and improves coordination. Current spacers are often limited by a sterile medical design, while the Watchhaler design presents a coloured toy and provides a positive atmosphere to the child.

The Watchhaler has a valve controls the inspiration speed during the inhalation which helps to achieve a slow and even inhalation and therefore a successful inhalation. Due to the transparent design, parents can watch the deflating balloon and get a visible feedback control of the inhalation manoeuvre.

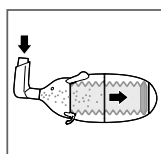
The Watchhaler design aims to present a helping friend to the child and to provide a better, more consistent result when taking inhaled medications.

	MDI	SPACER	WATCHHALER
Efficient dose	✓	✓	✓
Easy coordination and handling		✓	✓
Reduced electrostatic charge			✓
Controlled inhalation – Controlled deposition			✓
Visual Feedback			✓
Child-adequate Design			✓

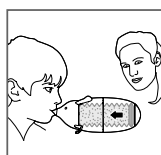
(more information at: www.watchhaler.com)

EASY HANDLING

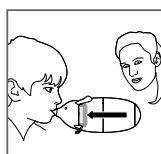
Using the Watchhaler is really simple:



1. Place the metered dose inhaler (MDI) onto the Watchhaler mouthpiece and release one puff

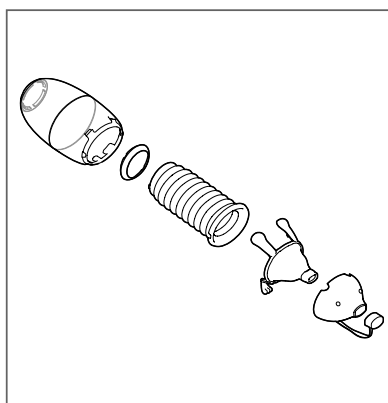


2. Breathe out completely and put the mouthpiece into the mouth



3. Let the child breathe in at the mouthpiece until the folding balloon is compressed completely

Remove the Watchhaler from the mouth and exhale. The folding balloon expands back to its home position.



TECHNICAL DATA

Maximum inhalation flow: 15l/min
Complete inhalation volume: 300ml
Weight: 170g
Dimensions: 218 x 92 x 84mm

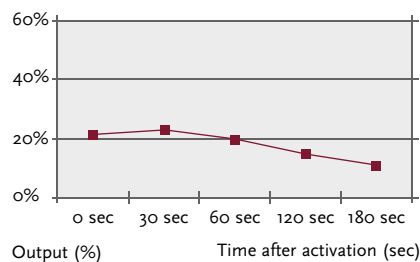
MATERIALS

Folding balloon, valve membrane: Silicone
Housing: clear ABS plastic
Balance pieces: PP plastic
(Head piece, protective cover, slip ring and valve cap)

LABORATORY DATA

The particle size of the used MDI will not be changed by the Watchhaler.

The emitted dose is similar to currently available spacers. The double chamber principles provides for sufficient aerosol for inhalation for over one minute.



PATIENTS' AND PARENTS' VIEW

Guidelines for asthma therapy in children recommend the use of spacers in connection with MDIs. A market observation showed a superior rating of the Watchhaler by patients and their parents:

- Most patients chose the Watchhaler after the first use.
- Reduced electro-static charge provides for a constant drug dose.
- Visible feedback motivates the child and helps their parents
- Dose in one breath is a enormous time saving
- Child-adequate design for a better compliance

Overall the Watchhaler helps to make the inhalation as effective and convenient as possible for the young patient. The Watchhaler wants to be a "helping friend".



WATCHHALER™



ACTIVAERO
TECHNOLOGIES

Activaero GmbH
Wohraer Str. 37
35285 Gemünden - Germany
Fax: +49 6453 | 64818 22
email: service@watchhaler.de